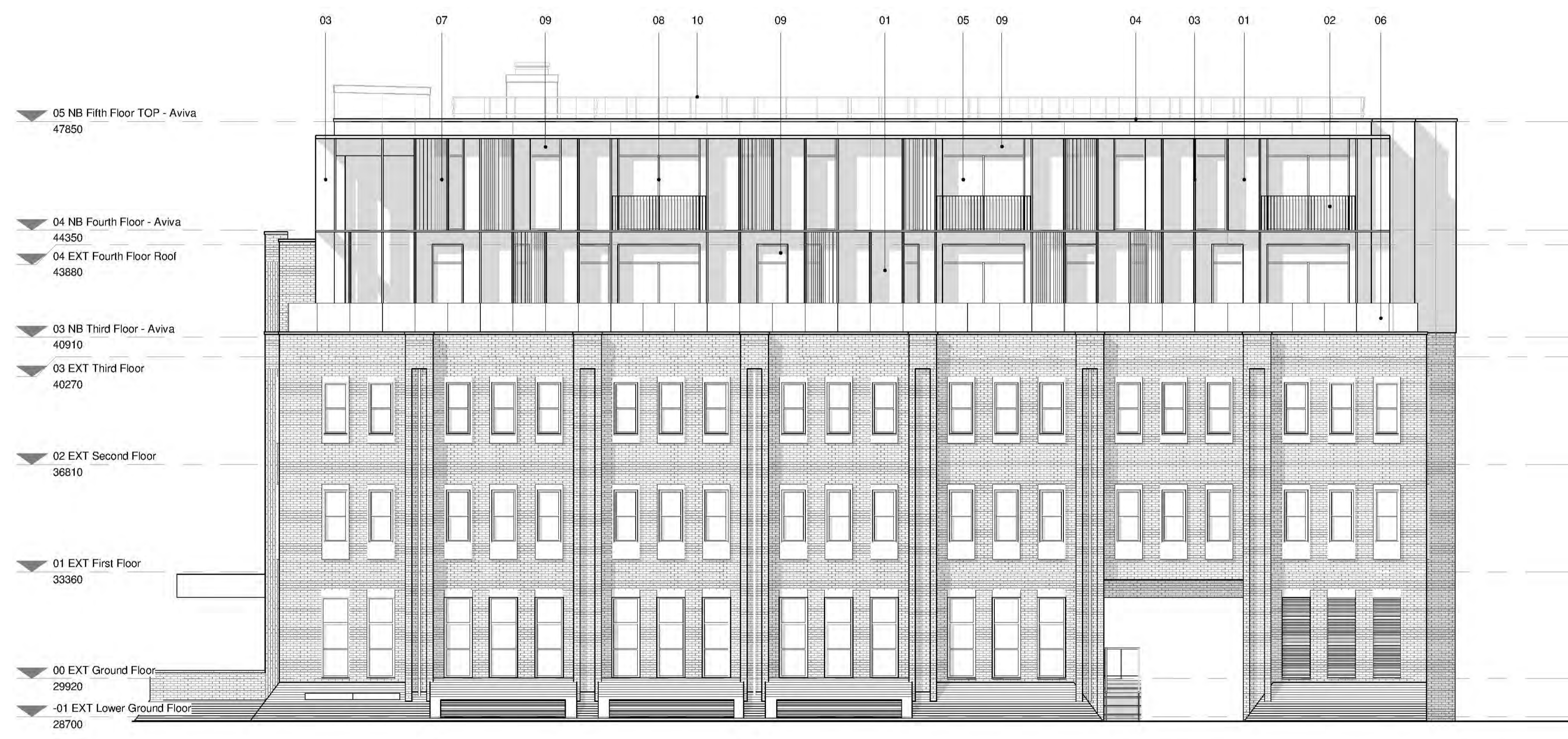


© Whittam Cox Architects - Disclaimer  
 This drawing is copyright of WCEC Group Ltd trading as Whittam Cox Architects, and shall not be reproduced or used for any other purpose without the written permission of the Architects. This drawing must be read in conjunction with all other related drawings and documentation.  
 It is the contractor's responsibility to ensure full compliance with the Building Regulations, do not scale from this drawing, and regard dimensions on site. Any discrepancies to be reported immediately.  
 IF IN DOUBT ASK.  
 Materials not in conformity with relevant British or European Standards/Codes of practice or materials known to be deleterious to health & safety must not be used or specified on this project.

1. Black Metal Cladding
2. Black Metal Balustrade
3. Black Metal Shading Fin
4. Black Aluminum Flashing
5. Glass
6. Glass Balustrade
7. Bronze effect Perforated Metal Panel
8. Black Aluminum Windows & Doors
9. Dark Grey Spandrel Panel
10. 1100mm High Guard Rail



Proposed South Elevation NB.1  
 1:100

No	Date	Description	By	CD
A	22/10/18	Client's name revised	SH	GA

CLIENT  
 Baxter Estates Developments Ltd

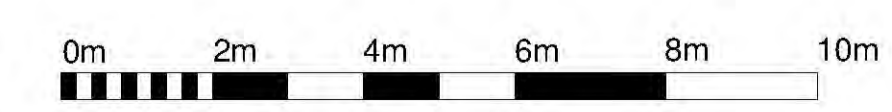
PROJECT  
 Northfield / Harcourt House

TITLE  
 Proposed South Elevation NB.1

DRAWINGS STATUS  
 SKETCH

DRAWN	SH	CHECKED	GA

SCALE 1:100 @ A1  
 DATE 19/10/18



**Whittam Cox** ARCHITECTS  
 Chesterfield / 01246 260 361  
 London / 02033 880 019  
 Leeds / 0113 468 2450  
 whittamcox.com

Project Originator Volume Level Type Role Number Revision  
 17-731 - WCA - A1 - XX - DR - A - PL203 - A